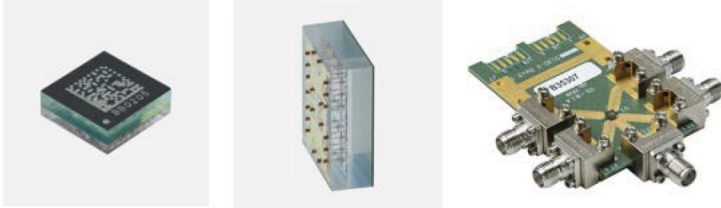




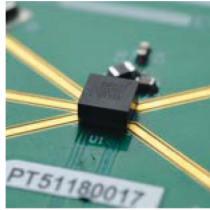
Menlo Micro Head Quarters  
49 Discovery, Suite 150 Irvine, CA 92618

**MM 5130 SP4T Switch**



- o DC - 26 GHz Frequency Range
- o 25 W (CW), 150 W (Pulsed) Max Power
- o Low On-State Insertion Loss: 0.4 dB @ 6.0 GHz
- o High Linearity, IIP3 > 95 dBm Typical
- o 25 dB Isolation @ 6.0 GHz
- o > 3 Billion Switching Operations

**MM 5120 SP4T Switch**



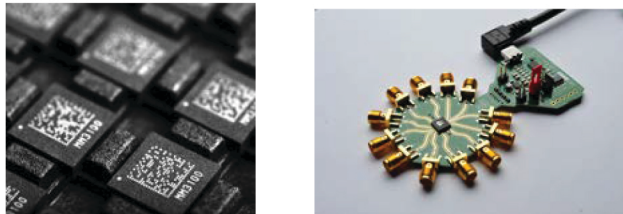
- o DC - 12 GHz Frequency Range
- o Integrated Gate Driver: VDD = 3.3V
- o Insertion Loss: 0.35 dB @ 6GHz
- o Isolation: >30 dB @ 6GHz
- o 25 W (CW), >150 W (Pulsed)
- o >3 Billion Switching Operations

**MM 5600 DPDT Switch**



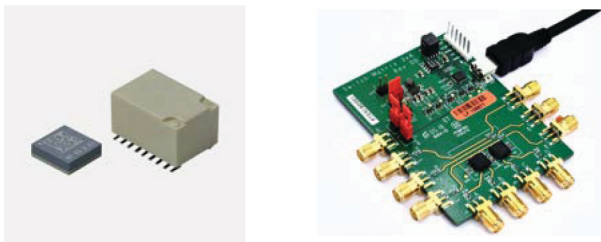
- o DC - 40 Gbps with Integrated Driver
- o > 3 Billion Switching Operations
- o <10  $\mu$ s operation time, <2  $\mu$ s release time
- o Power Consumption: < 0.08 mW
- o 94% reduction in size when compared to conventional EM relay solutions

**MM 3100 6 Channel SPST Switch**



- o DC - 3.0 GHz Frequency Range
- o 25 W (CW), 200 W (Pulsed) Max Power Handling
- o Low On-State IL, typical 0.3 dB @ 3.0 GHz
- o Low On-State Resistance < 0.75  $\Omega$
- o 25 dB Isolation @ 3 GHz
- o Integrated SPI Bus Gate Control

**MM 1200 6 Channel SPST Signal Relay**



- o High Density Signal Switching
- o AC & DC Circuits
- o 1.0 A Per Channel Steady State
- o Low On-State Contact Resistance
- o >3 Billion Switching Cycles
- o <10 $\mu$ s switching times

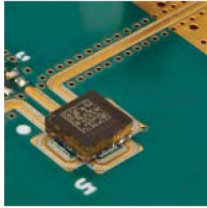
**MM 6005 UHF Filter - 7 Channel**



- o Frequency Range: 225-512 MHz
- o Low Loss: <1.5 dB
- o CW Power Handling: 60 W
- o Control: 4-bit binary
- o Third-Order Intercept: >95 dBm
- o 70.9 x 45.9 x 16.5 mm
- o Weight: 100 g
- o 90% Size reduction compared to competitors



Menlo Micro Head Quarters  
49 Discovery, Suite 150 Irvine, CA 92618



### MM 6105 Delay Shifter 2-bit (4-state)

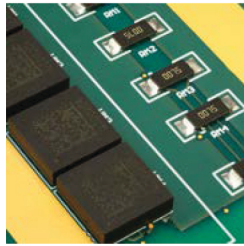
- o Max Input Power: 44 dBm
- o Insertion Loss: <0.5 dB @ 3.6 GHz
- o Supply Current: <100 micro  $\mu$ A
- o Linearity IP3: >85 dBm
- o Size 13 x 13 mm, will be 5 x 5 mm (2021)



### High Density PXI Switch Matrix

- o Occupied PXI Slots: 1
- o Switching Speed: <  $\mu$ s
- o >3 Billion Operations (Mechanical)
- o Insertion Loss: 1.8 dB @ 12 GHz
- o Isolation: 70 dB
- o Save Space and Cost

### MM 9100 SPST Power Relay



- o Technology Demonstration Board
- o Power Relay Prototype
- o Contact Current Rating – 10 Amp DC/AC
- o 150 V DC
- o  $\pm$ 150 V AC peak
- o 50 ohm
- o > 3 Billion Cold Switching Operations
- o PIC16  $\mu$ C Controlled with I2C interface
- o Compact 6.6 cm X 4.8 cm X 1.0 cm
- o 3 KV control-to-signal isolation



Menlo Micro YouTube Channel

Click logo

- o American Owned
- o Small Business
- o General Electric Heritage
- o Constant Innovation
- o Aerospace/Defense, Medical, Communications/5G, IoT, Test & Measurement Markets
- o [www.menlomicro.com](http://www.menlomicro.com)

VISIT OUR WEBSITE AT [INNERHARBORTECH.COM](http://INNERHARBORTECH.COM)  
TO SCHEDULE A VIRTUAL PRODUCT DEMO