

H+S Connectivity Product Lines

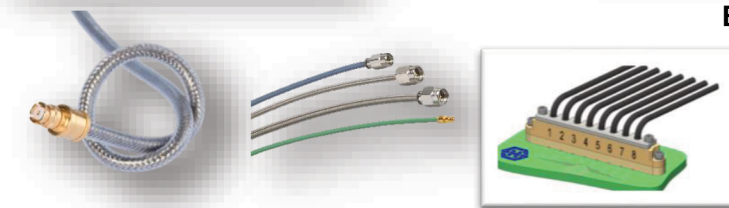
www.hubersuhner.com

HUBER+SUHNER



Microwave Cable Assemblies

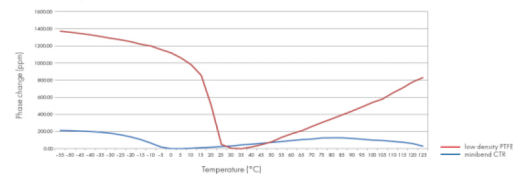
- o Sucoflex 100, 200, 300, 400 & 500 Series
- o Multiflex 53, 86 & 141 Series
- o Field Mountable MW Cables EACON
- o DC-70GHz Rotary Swaged Technology
- o Ultra-Low loss
- o Outstanding Phase stability
- o **VNA Grade Cables**



Bend-to-the-End Cable Assemblies

- o Microbend & Microbend L
- o Minibend & Minibend L
- o Mini141
- o DC to 67GHz
- o SMA, SSMA, K, SMP, SMPM

Phase stability versus temperature



Phase Invariant Cable Assemblies

- o Minibend CTR
- o Mini141 CT phase invariant
- o Sucoform 86 CT
- o EZ 86 CT



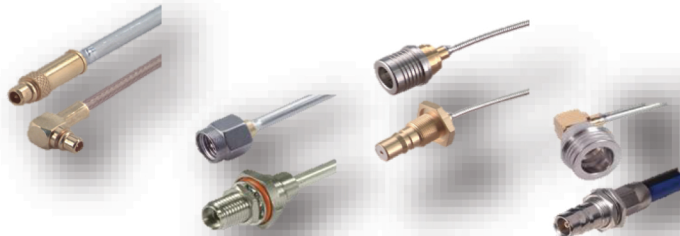
RF Cable Assemblies

- o RG assemblies
- o Enviroflex
- o Spuma
- o Rotor Swaged & Low Smoke Zero Halogen
- o Corrugated Cables



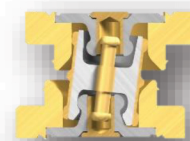
RF/MW Connectors

- o MCX, MMCX, MMPX
- o SMB, SMC, BMA
- o SMA, PC3.5, SK (PC2.92), PC2.4, PC1.85
- o BNC, TNC, Type-N
- o QMA, QMA eXtreme
- o QN, QN eXtreme



Board-to-Board Connections

- o MBX, 6GHz
- o MMBX, 12GHz
- o MFBX, 3.5GHz
- o SMP, 40GHz
- o SMPM, 67GHz
- o Contact Bridge
- o Up to 30mm

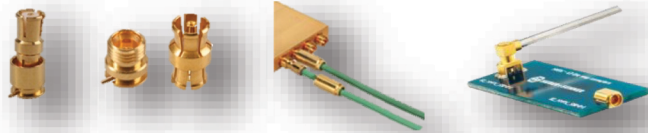


VISIT OUR WEBSITE AT INNERHARBORTECH.COM
TO SCHEDULE A VIRTUAL PRODUCT DEMO

H+S Connectivity Product Lines

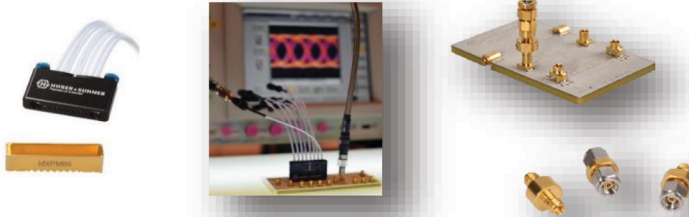
www.hubersuhner.com

HUBER+SUHNER



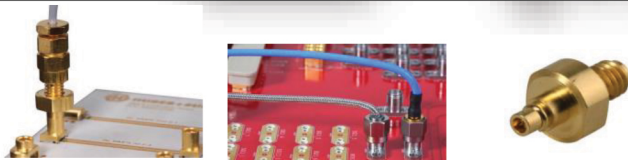
MMPX, SMP, SMPM, SMPM-T: High Freq

- o Standard SMP (40GHz)
- o Mil Grade SMP (40GHz)
- o SMPM & SMPM-T (67GHz)
- o MMPX (80GHz)



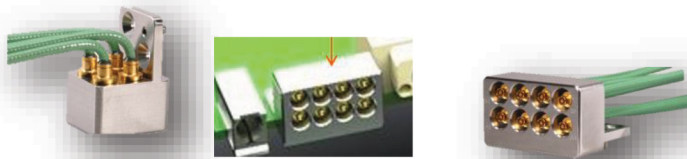
High-Speed Digital Test: MXP, MXPM, MMPX

- o MXP 18, 40, 50 GHz
- o MXPM 40 to 85 GHz
- o 1x8 & 2x8, 0.1 Inch Pitch
- o MMPX 80 GHz
- o True Coax to PCB Transition
- o PC1.0 @ 110GHz



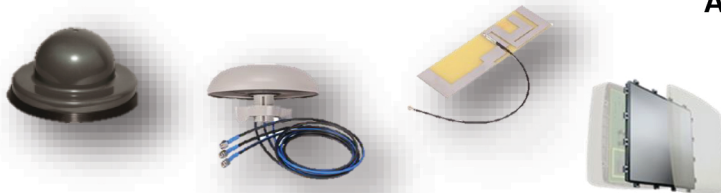
Test & Measurement

- o Adaptors (within series, between series)
- o Test cables – Sucoflex, Sucotest
- o Resistive Products – Terminations, Attenuators
- o TVAC Cables and connectors



Vita 67 With Bend-To-The-End Cable

- o Minibend & Microbend
- o Bend Radius 0.060" (1.5mm)
- o Vita 67.1, 67.2, 67.3
- o NanoRF Licensed Interface
- o VPX Backplanes



Antenna Solutions

- o 400MHz to 90GHz
- o Omni, Directional, and Point-to-Point
- o Metalized Plastic
- o WiFi, SISO, MIMO 2x2, 3x3, 4x4
- o Low-PIM, Outdoor, Industrial, Rail, Auto
- o High-Power Signal Jamming



RF-over-Fiber Systems

- o RF, GPS, LAN, Digital, 1MHz To 60GHz
- o Direct GPS-over-Fiber (power-over-Fiber)
- o Low Noise Figure Options
- o Temperature Range, -40C to +85C
- o Customized Solutions



Lighting & NEMP Protectors

- o Data Line Protectors
- o GDT Protectors
- o Quarter-wave Shorting Stub Protectors
- o High Voltage DC/DC Blocks
- o Hybrid Protectors

VISIT OUR WEBSITE AT INNERHARBORTECH.COM
TO SCHEDULE A VIRTUAL PRODUCT DEMO